

# Is Education the Cause of America's “Men Without Work” Crisis? Or Maybe the Solution?

Nicholas Eberstadt  
American Enterprise Institute  
[Eberstadt@aei.org](mailto:Eberstadt@aei.org)

Education 20/20 Project  
Hoover Institution DC  
October 11, 2018

# Table 1: US male “work rates”: Right Now vs. Selected Depression years

Year and source	Employment to population ratio, men 20-64 (percentage of civilian non-institutional population)	Employment to population ratio, men 25-54 (percentage of civilian non-institutional population)
August 2018 (BLS, seas. Unadj.)	80.3	86.2
1940 (Census)	81.3	86.4
1930 (Census)	88.2*	91.2*^

Notes: \* = calculated for total enumerated population, not civilian non-institutional population

^ = 25-44 population—corresponding male 25/44 work ratio for 2015 would be 85.3 for civilian non-institutional population alone

Sources: For August 2018: Derived from BLS “Labor Force Statistics from Current Population Survey”, <https://www.bls.gov/web/empsit/cpseea13.htm> October 10, 2018;

For 1940: derived from [http://www.jstor.org/stable/117246?seq=1#page\\_scan\\_tab\\_contents](http://www.jstor.org/stable/117246?seq=1#page_scan_tab_contents) ; <http://censusacn.adobeaecloud.com/library/publications/1943/dec/population-labor-force-sample.html> Table 1; <http://www2.census.gov/library/publications/decennial/1940/population-institutional-population/08520028ch2.pdf> ; <http://www.dtic.mil/dtic/tr/fulltext/u2/a954007.pdf>. Accessed August 5, 2016.

For 1930: [http://digital.library.unt.edu/ark:/67531/metadc26169/m1/1/high\\_res\\_d/R40655\\_2009Jun19.pdf](http://digital.library.unt.edu/ark:/67531/metadc26169/m1/1/high_res_d/R40655_2009Jun19.pdf). Accessed March 2, 2016

Copyright Nicholas Eberstadt

Figure 1: The Great Postwar "Flight From Work" by Men  
 US Male 25-54 Unemployed vs. Not In Labor Force (NILF) : Jan 1948- Aug 2018  
 (In 000s; Seasonally unadjusted monthly data)

— NILF — Unemployment

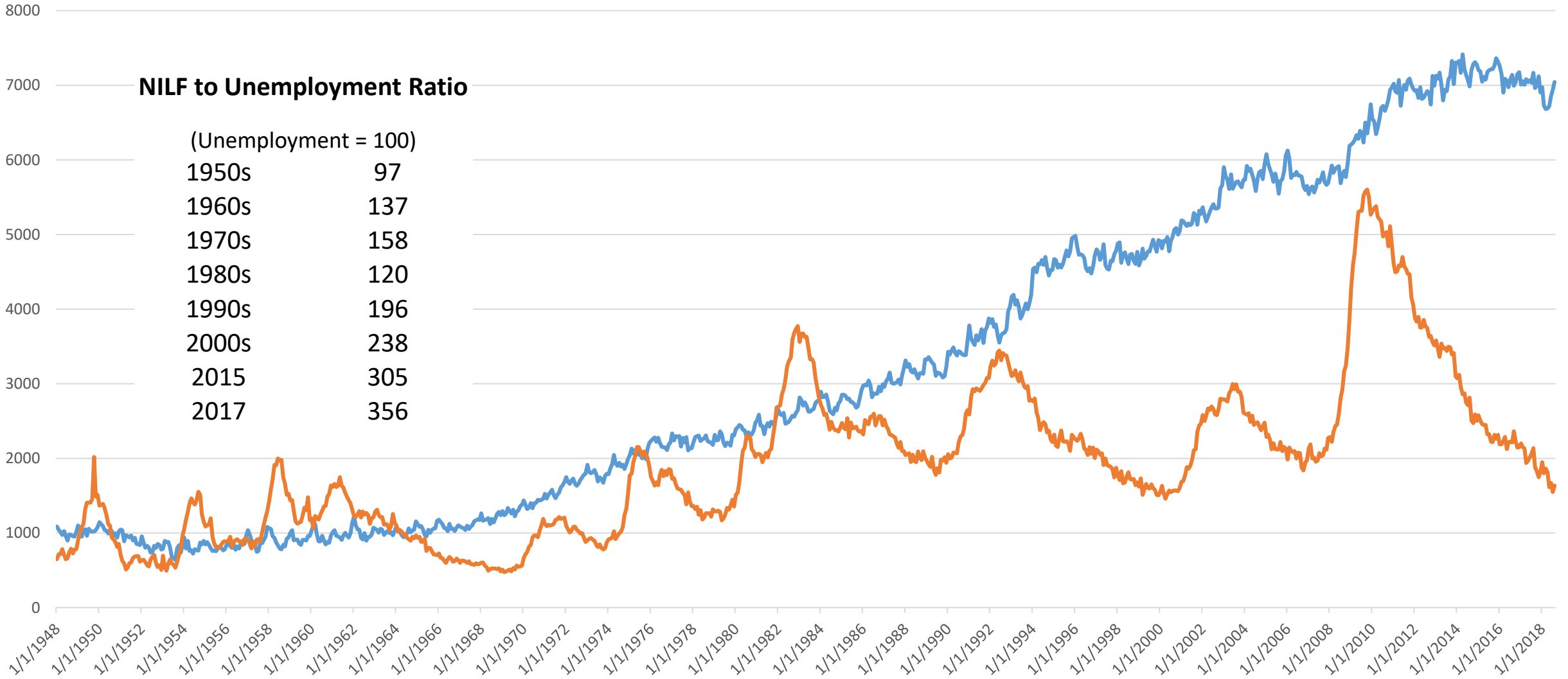
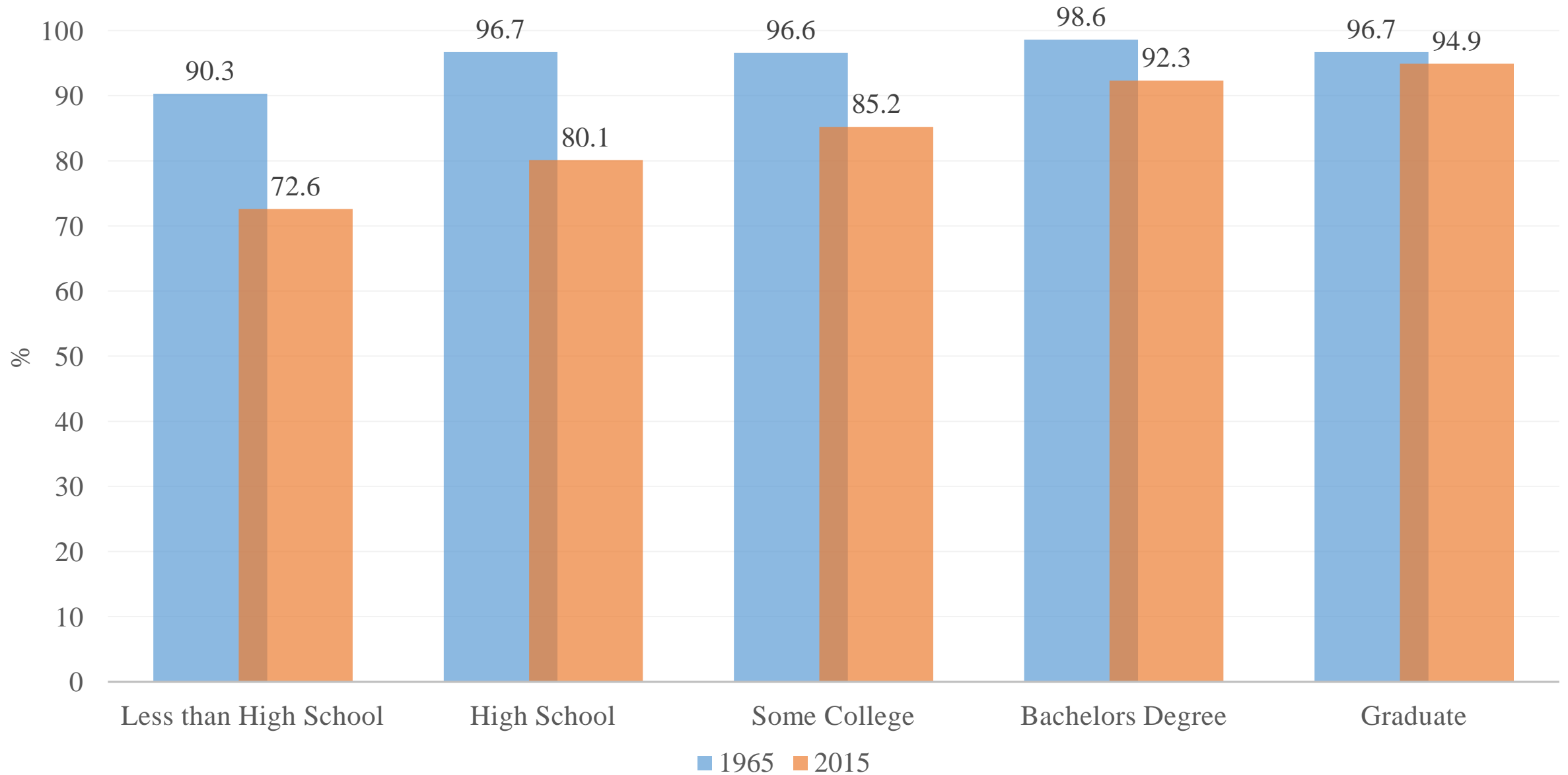


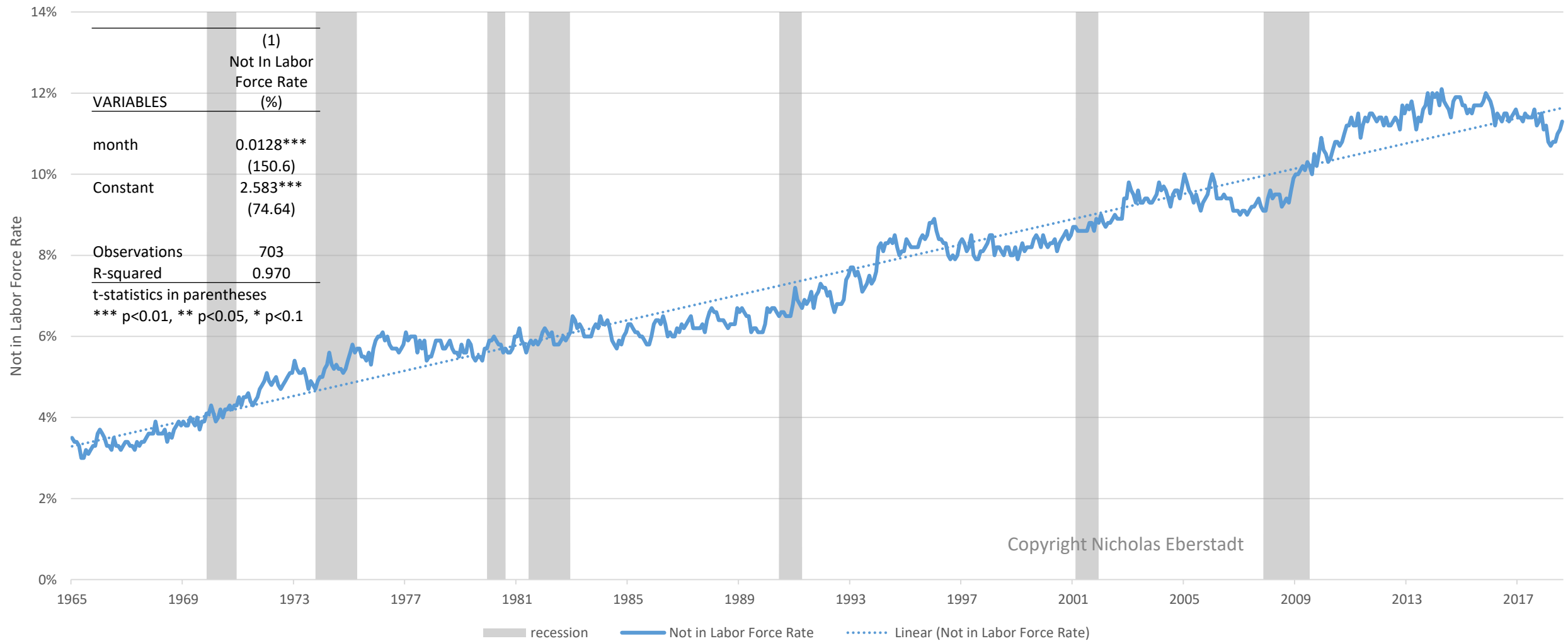
Figure 2: Work Rates for Prime Age Males by Educational Attainment, 1965 vs. 2015



Source: Flood, Sarah, Miriam King, Steven Ruggles, and J. Robert Warren. 2015. Integrated Public Use Microdata Series, Current Population Survey: Version 4.0. Annual Social and Economic supplement (ASEC) . Minneapolis: University of Minnesota. Retrieved August 2016. (<http://doi.org/10.18128/D030.V4.0>).

# Figure 3 The Uncanny Regularity of the Male Flight From Work

NILF Rates for Men 25-54 Years of Age: USA, 1965-2018



Notes: Recession variables- The data used to create this figure is from the “Current Population Survey” (CPS) as was downloaded from the Bureau of Labor Statistics. The data used to create the regression table in the upper left corner is also from the “Current Population Survey” but was downloaded from IPUMS-CPS for statistical manipulation.

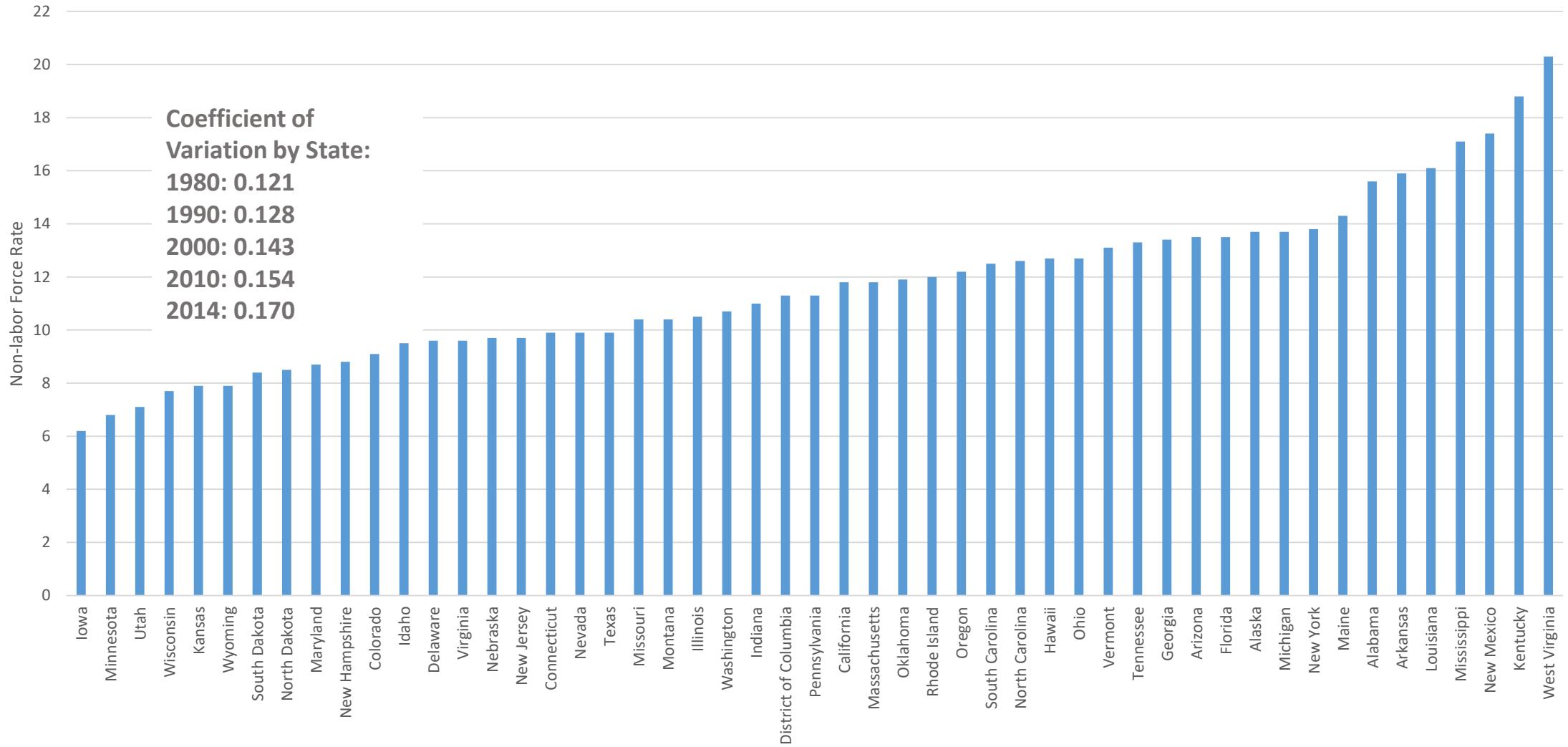
Recession dummy variables for the following recessions spanning the subsequent years- (1969-1970), (1973-1975), (1980-1982), (1990-1991), 2001, and (2007-2009).

Sources: Labor Force Data: Men 25-54 from 1948-2015 (Monthly Data), Bureau of Labor Statistics <http://data.bls.gov/pdq/querytool.jsp?survey=ln>.

Recession Data: National Bureau of Economic Research (NBER) “U.S. Business Cycle Expansions and Contractions” <http://www.nber.org/cycles.html>.

# Figure 4: Are The U-Hauls?

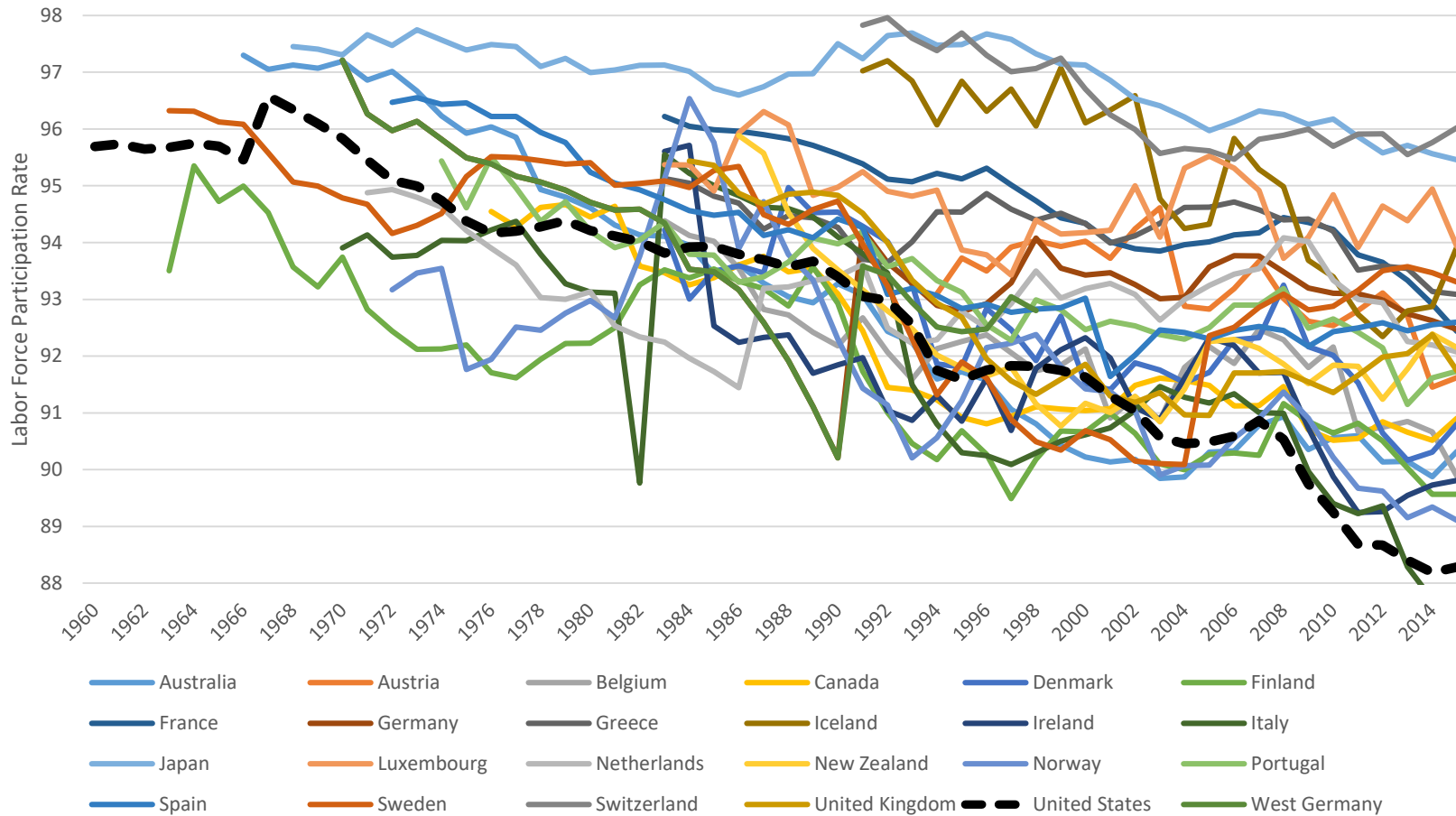
NILF Rates Among Prime Age Males by State (2015)



Copyright Nicholas Eberstadt

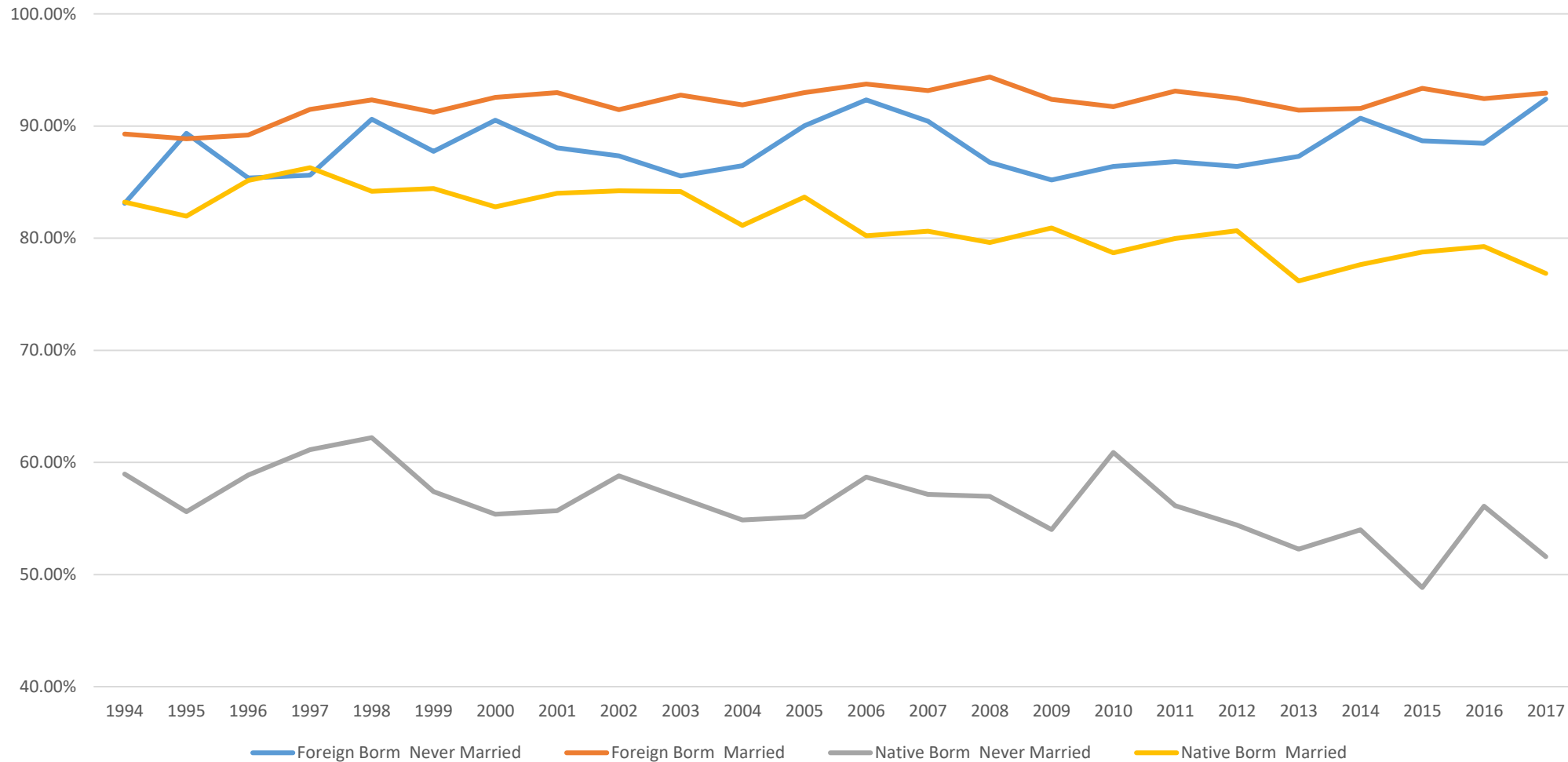
# Figure 5: Race To The Bottom

Labor Force Participation Rates for Men Ages 25-54:  
USA vs. 22 "Original" OECD Member States, 1960-2015



Copyright Nicholas Eberstadt

Figure 6  
 Labor Force Participation Rate for Prime Age Men with Less than a High School  
 Diploma , Foreign Born and Native Born, Married and Never Married  
 (1994-2017)



Source: Sarah Flood, Miriam King, Renae Rodgers, Steven Ruggles, and J. Robert Warren. *Integrated Public Use Microdata Series, Current Population Survey: Version 6.0* [dataset]. Minneapolis, MN: IPUMS, 2018.  
<https://doi.org/10.18128/D030.V65.0>



**Figure 7**  
**Reported Recipiencence of Disability Benefits and Means Tested Benefits by Education:**  
**US Prime Age Non-Labor Force Men, 2013 (percent)**

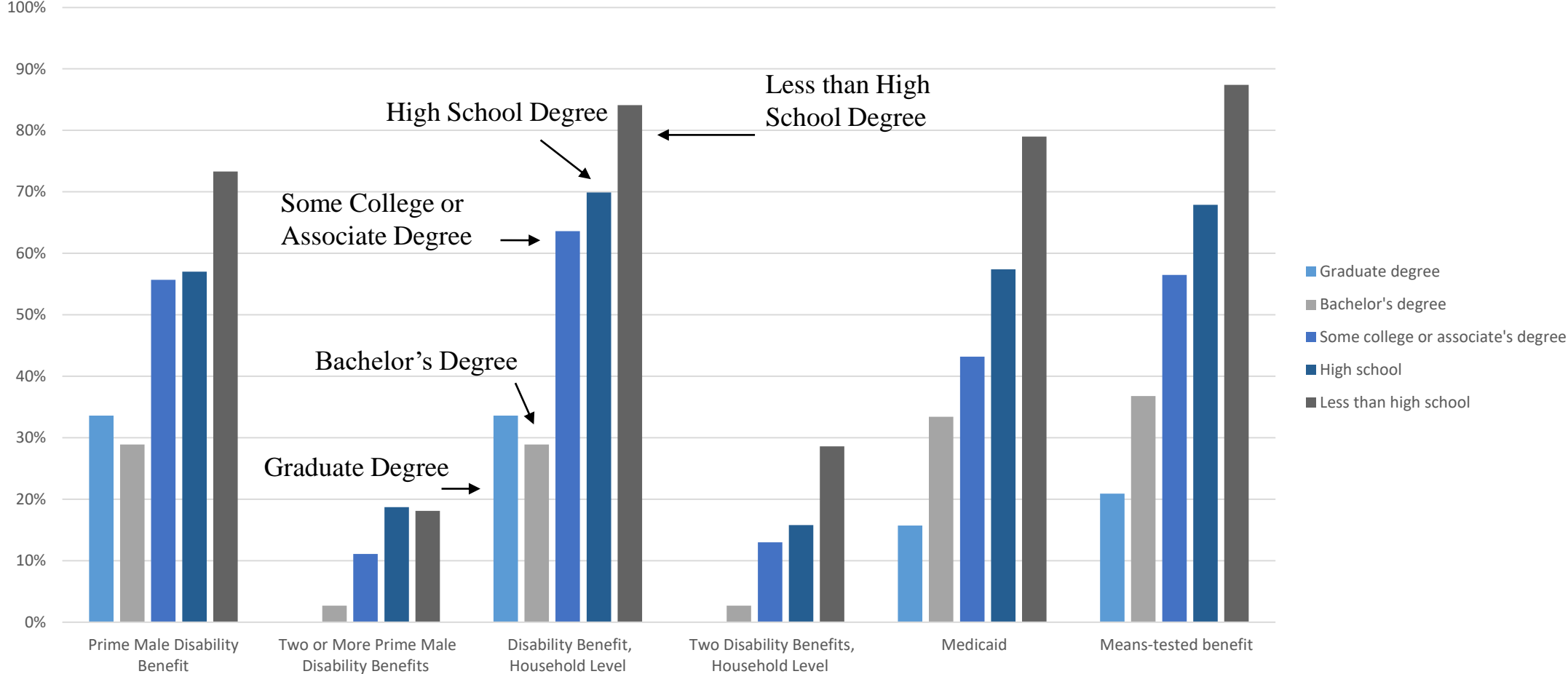


Figure 8: Estimated Population of Felons and Ex-Felons: USA, 1948-2010

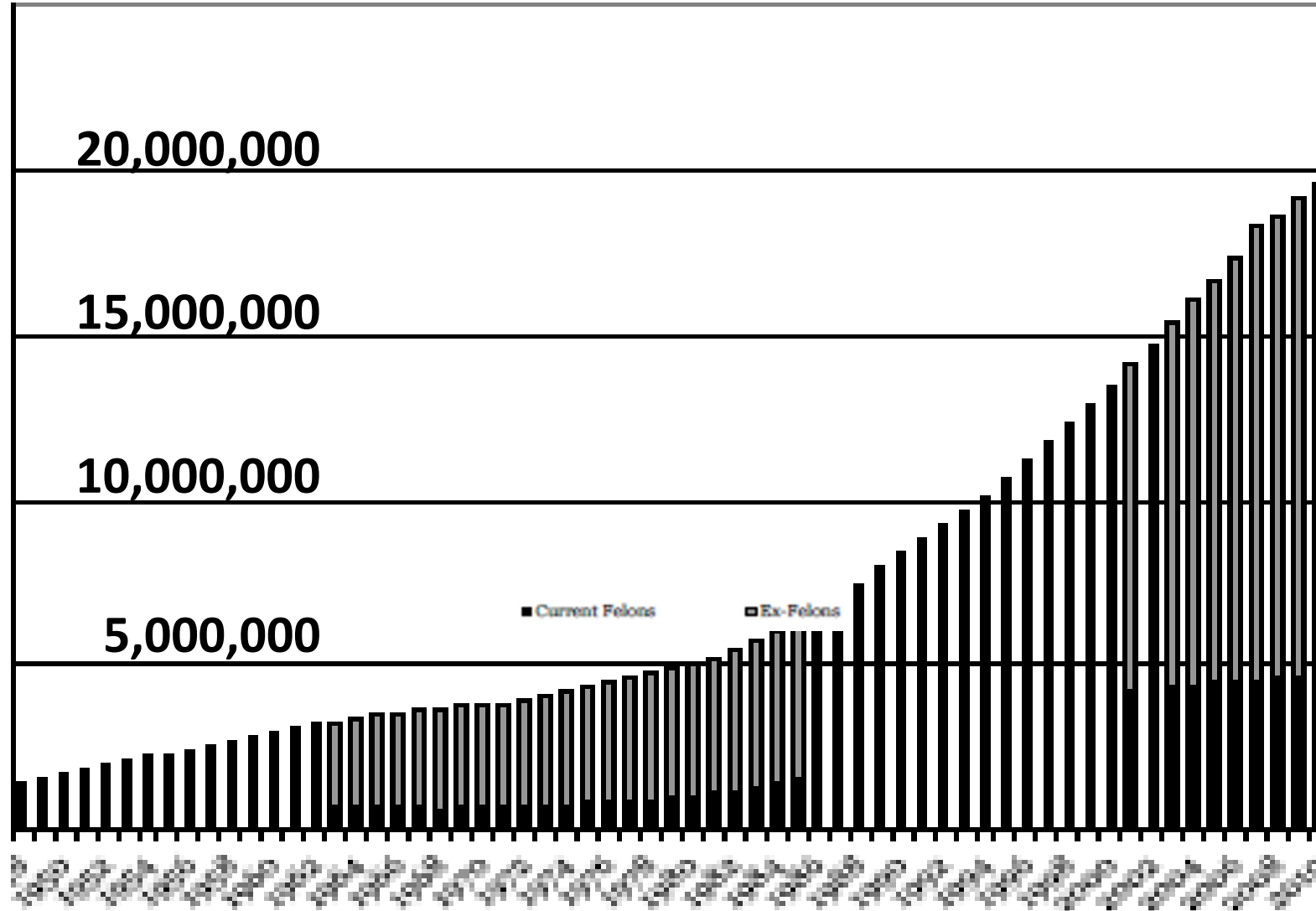
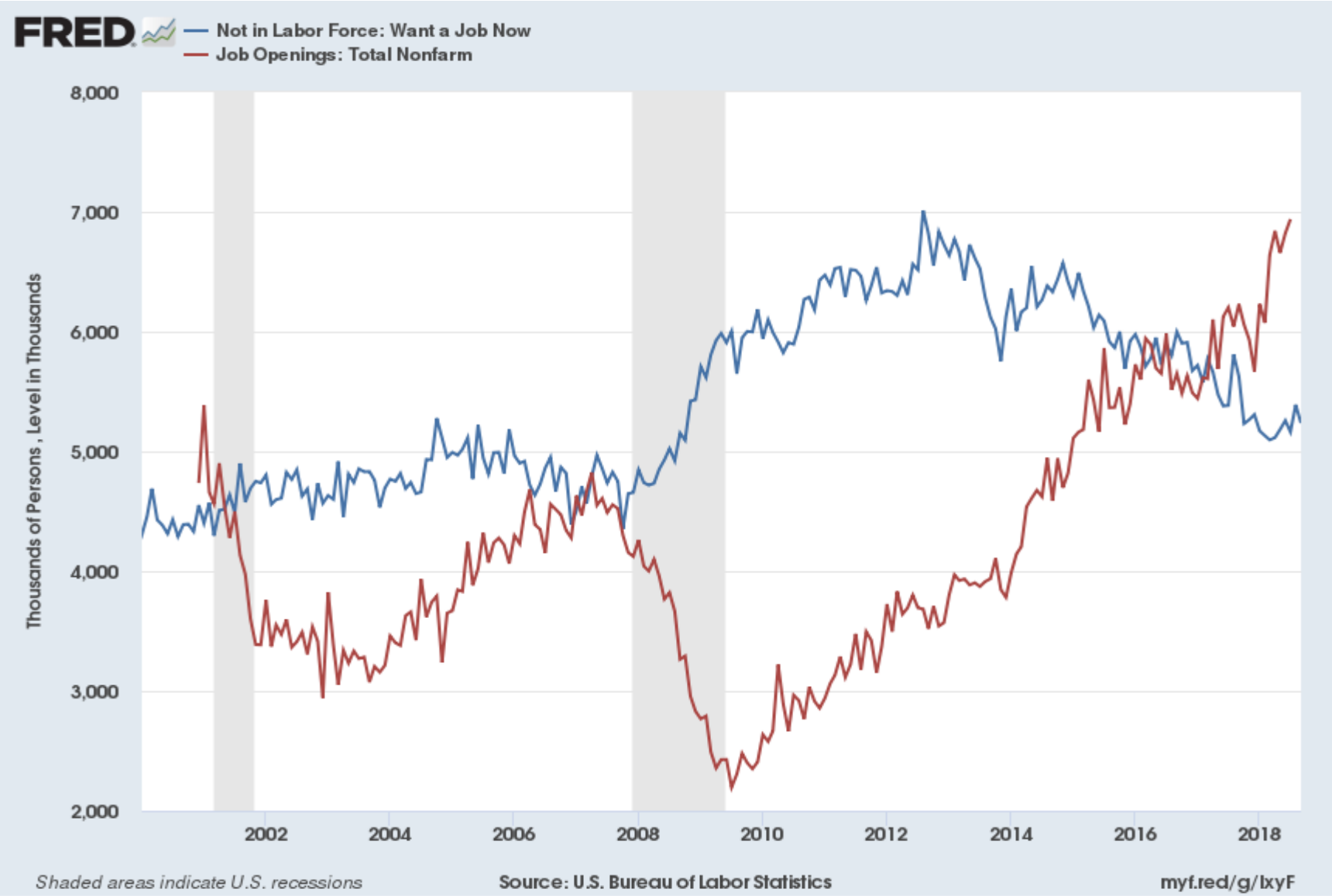


Figure 9: The Paradoxical US Labor Market—Labor Shortages \*and\* Low Work Rates



## Table 2

Job Openings July 2018 (in 000s) vs Select Labor Market Measures September 2018

<b>Total</b>	<b>6,939</b>
Total Private	6,316
--Construction	273
--Retail Trade	757
--Leisure and Hospitality	1,003

Memorandum items:

--NILF Males 25-54 ~7.0 M

--Ditto, w/o HS degree ~1.7 M

--Ditto, HS degree only ~3.6 M